



APPLICATIONS

The Yamashita range of pumps complies fully to the international standard BS EN 733 (DIN 24255). This standard covers both performance and dimensions. BS EN 1028-1 also applies in General and safety requirements for Fire Fighting pumps.

This pump includes the back pull-out design, and when a suitable spacer coupling is fitted to a direct coupled unit, the casing and motor can remain position while all other pump parts can be removed for simple and quick maintenance.

The volute casing is fitted with a replaceable wear ring and has a suction vane to give smooth flow into the double shrouded hydraulically balanced impeller.

Only four shaft assemblies are required to cover the total range, and this gives many common interchangeable parts for pumps fitted to the same shaft.

Standard pump is fitted with a packed stuffing box incorporating a lantern ring which includes internal flushing by the liquid being pumped, or can be converted to external flushing, and all of these pumps can be fitted with a mechanical seal.

Pumps can be supplied as a bare shaft unit, or in many other arrangements, including complete with coupling, guard, baseplate, and either electric motor or engine.

MAXIMUM TEMPERATURE

With standard packed gland - minus 10°C to 105°C.
Maximum with cooled stuffing box - 160°C
With mechanical seal - maximum depends upon seal used.

MAXIMUM PRESSURE

Maximum operating pressure up to 1500kPa.
Maximum test pressure up to 2100kPa.
(Maximum pressure will vary depends on particular pump model - higher ratings available on application).

MAXIMUM SPEED

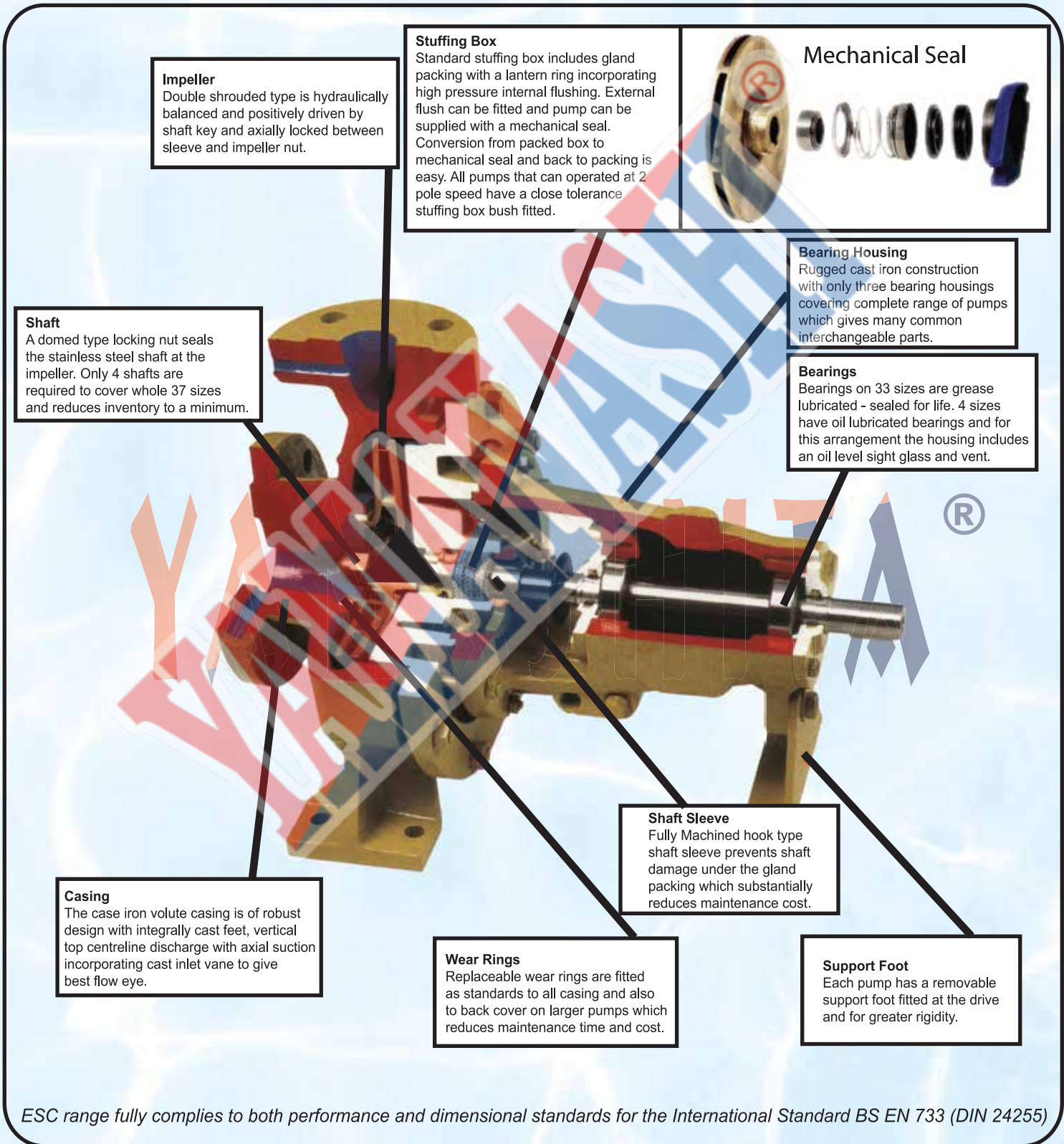
Maximum directed coupled speed for pumps varies between 3500 RPM and 1750 RPM, depending upon pump size, and method of drive.

	Bronze Fitted		All Iron
Casing	Cast iron	Cast Iron	Cast Iron
Impeller	Bronze	Cast Iron	Cast Iron
Wear Ring	Cast Iron	Cast Iron	Cast Iron
Shaft	Stainless Steel	Stainless Steel	Stainless Steel
Shaft Nut	Bronze	Bronze	Cast Iron
Shaft Sleeve	Stainless Steel	Stainless Steel	Stainless Steel
Lantern Ring	Cast Iron	Cast Iron	Cast Iron
Gland	Cast Iron	Cast Iron	Cast Iron

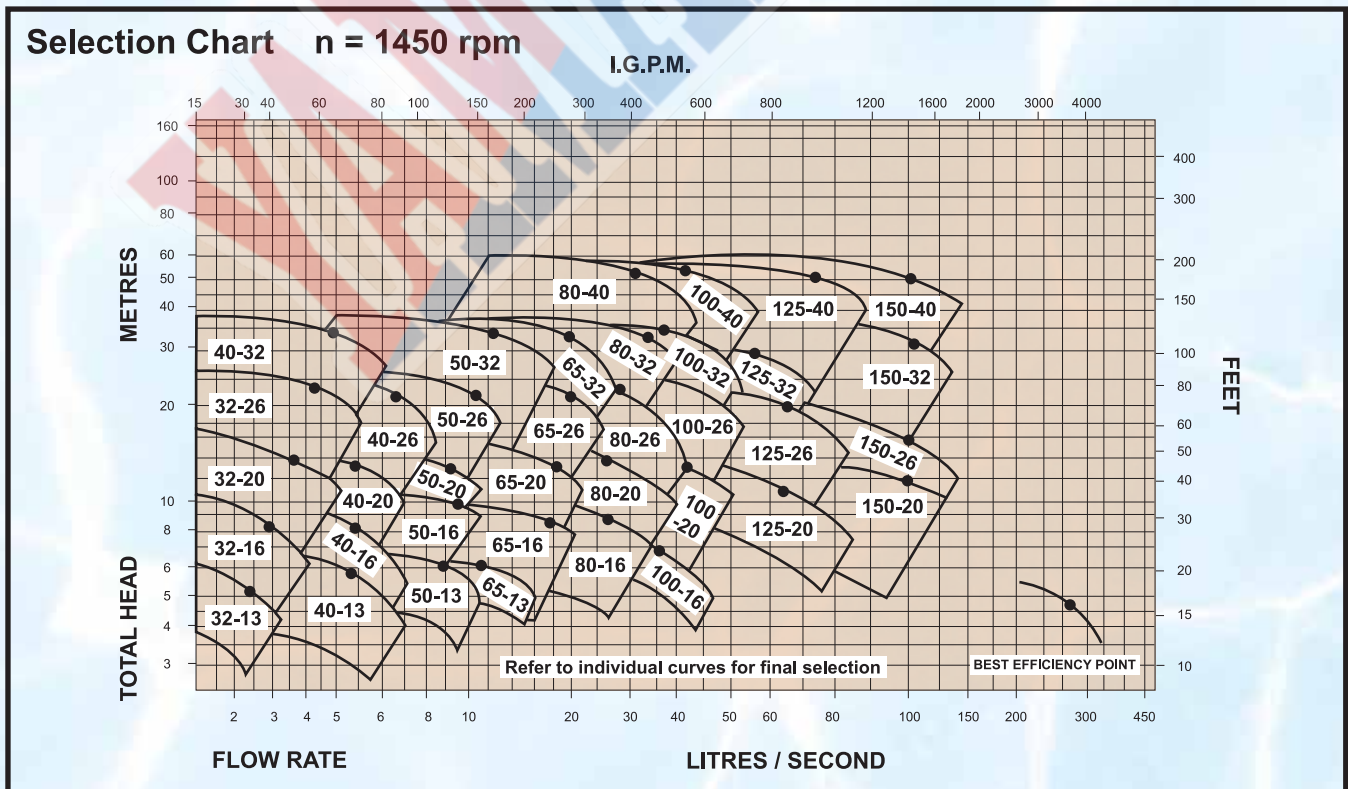
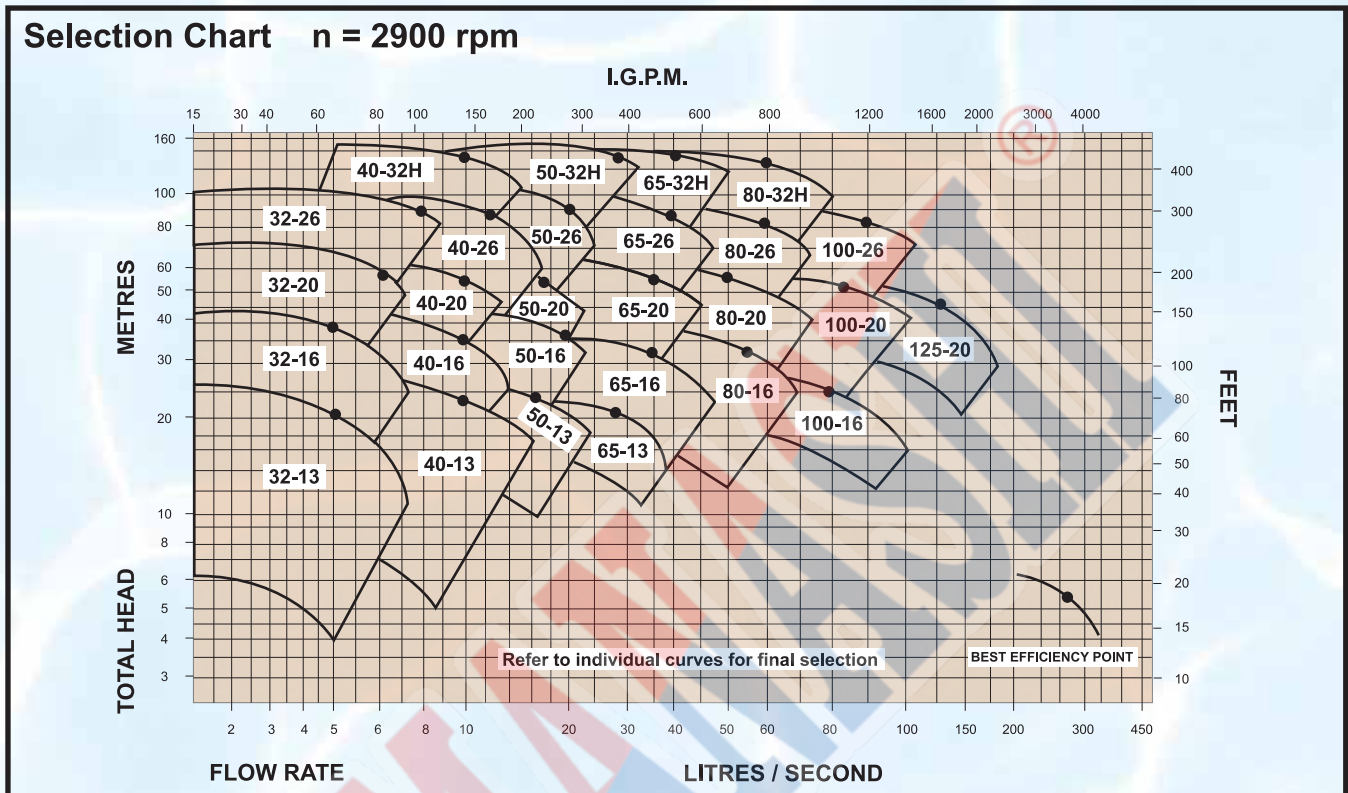
MATERIALS SPECIFICATION

Material	Nearest Equivalent Standard			
	Australian	British	American	DIN
Cast Iron	AS1830 / T200	BS1452: GR220	AS TM A48 Class 30	DIN1691 GG20
Bronze	AS1565 / 836B	BS1400: LG2	ASTM B145 CDA836	DIN1705
Stainless Steel	AS1444 GR420	BS970: 420 / S37	AIS1420	DIN17440

Features & Benefits



Performance Curves 50Hz



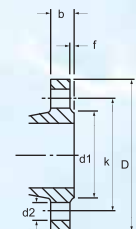
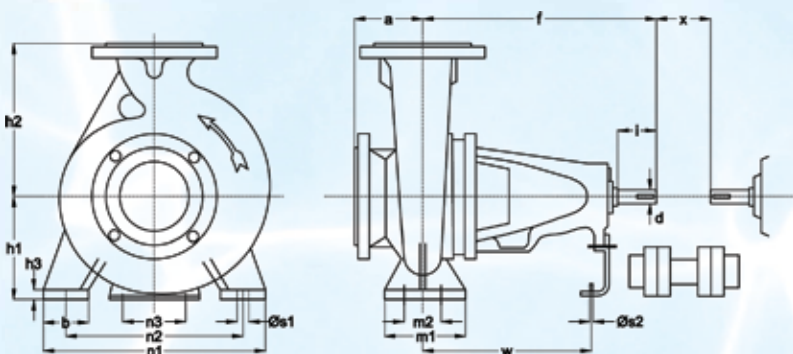
Dimensions

PUMP SIZE	BEARING HOUSING	SUCTION	DISCHARGE	PUMP DIMENSIONS				FOOT DIMENSIONS										SHAFT END		COUPLING KEY	NET WEIGHT kg	
				a	f	h1	h2	b	m1	m2	n1	n2	n3	h3	ØS1	ØS2	w	x	d			i
32-13	25	50	32	80	360	112	140	50	100	70	190	140	100	14	14	14	267	140	24	50	8x7	28
32-16	25	50	32	80	360	132	160	50	100	70	240	190	100	14	14	14	267	140	24	50	8x7	36
32-20	25	50	32	80	360	160	180	50	100	70	240	190	110	14	14	14	267	140	24	50	8x7	43
32-26	25	50	32	100	360	180	225	65	125	95	320	250	110	14	14	14	267	140	24	50	8x7	63
40-13	25	65	40	80	360	112	140	50	100	70	210	160	100	14	14	14	267	140	24	50	8x7	31
40-16	25	65	40	80	360	132	160	50	100	70	240	190	100	14	14	14	267	140	24	50	8x7	37
40-20	25	65	40	100	360	160	180	50	100	70	265	212	110	14	14	14	267	140	24	50	8x7	46
40-26	25	65	40	100	360	180	225	65	125	95	320	250	110	14	14	14	267	140	24	50	8x7	63
40-32	35	65	40	125	470	200	250	67	125	95	350	280	110	14	14	14	342	140	32	80	10x8	96
40-32H	35H	65	40	125	470	200	250	67	125	95	350	280	110	14	14	14	342	140	32	80	10x8	96
50-13	25	65	50	100	360	132	160	50	100	70	240	190	100	14	14	14	267	140	24	50	8x7	34
50-16	25	65	50	100	360	160	180	50	100	70	265	212	100	14	14	14	267	140	24	50	8x7	38
50-20	25	65	50	100	360	160	200	50	100	70	265	212	110	14	14	14	267	140	24	50	8x7	48
50-26	25	65	50	100	360	180	225	65	125	95	320	250	110	14	14	14	267	140	24	50	8x7	65
50-32	35	65	50	128	470	225	280	65	125	95	350	280	110	16	14	14	342	140	32	80	10x8	101
50-32H	35H	65	50	128	470	225	280	65	125	95	350	280	110	16	14	14	342	140	32	80	10x8	101
65-13	25	80	65	100	360	160	180	65	125	95	280	212	110	14	14	14	267	140	24	50	8x7	40
65-16	25	80	65	100	360	160	200	65	125	95	280	212	110	14	14	14	267	140	24	50	8x7	44
65-20	25	80	65	100	360	180	225	65	125	95	320	250	110	14	14	14	267	140	24	50	8x7	54
65-26	35	80	65	100	470	220	250	80	160	120	260	280	110	16	18	14	342	140	32	80	10x8	83
65-32	35	80	65	125	470	225	280	80	160	120	400	315	110	16	18	14	342	140	32	80	10x8	110
65-32H	35H	80	65	125	470	225	280	80	160	120	400	315	110	16	18	14	342	140	32	80	10x8	110
80-16	25	100	80	125	360	180	225	65	125	95	320	250	110	14	14	14	267	140	24	50	8x7	55
80-20	35	100	80	125	470	180	250	65	125	95	345	280	110	14	14	14	342	140	32	80	10x8	72
80-26	35	100	80	125	470	200	280	80	125	120	400	315	110	16	18	14	342	140	32	80	10x8	92
80-32	35	100	80	125	470	250	315	80	160	120	400	315	110	16	18	14	342	140	32	80	10x8	120
80-32H	35H	100	80	125	470	250	315	80	160	120	400	315	110	16	18	14	342	140	32	80	10x8	120
80-40	45	100	80	125	530	280	355	80	160	120	440	355	110	18	18	14	370	140	42	110	12x8	162
100-16	35	125	100	125	470	200	250	80	160	120	360	280	110	16	18	14	342	140	32	80	10x8	71
100-20	35	125	100	125	470	200	280	80	160	120	360	280	110	16	18	14	342	140	32	80	10x8	87
100-26	35	125	100	140	470	225	280	80	160	120	400	315	110	16	18	14	342	140	32	80	10x8	110
100-32	35	125	100	140	470	250	315	80	160	120	400	315	110	16	18	14	342	140	32	80	10x8	134
100-32H	45H	125	100	140	500	250	315	80	160	120	400	315	110	16	18	14	363	140	32	80	12x8	144
100-40	45	125	100	140	530	280	355	100	200	150	500	400	110	18	23	14	370	140	42	110	12x8	177
125-20	35	150	125	140	470	250	315	80	160	120	400	315	110	16	18	14	342	140	32	80	10x8	106
125-26	45	150	125	140	470	250	355	80	160	120	400	315	110	16	18	14	342	140	32	80	10x8	115
125-32	45	150	125	140	530	280	355	100	200	150	500	400	110	18	23	14	370	140	42	110	12x8	163
125-40	45	150	125	140	530	315	400	100	200	150	500	400	110	18	23	14	370	140	42	110	12x8	190
150-20	35	200	150	160	495	250	355	100	200	150	450	350	110	18	23	14	367	140	32	80	12x8	148
150-26	45	200	150	160	530	280	400	100	200	150	550	450	110	18	23	14	370	140	42	110	12x8	156
150-32	45	200	150	160	530	280	400	100	200	150	550	450	110	18	23	14	370	140	42	110	12x8	175
150-40	45	200	150	160	530	315	450	100	200	150	550	450	110	18	23	14	370	140	42	110	12x8	210
200-32	55	250	200	180	670	315	480	120	230	170	600	480	110	22	28	14	504	140	48	110	14x10	251
200-40	55	250	200	180	670	355	480	120	230	170	600	480	110	25	28	14	504	140	48	110	14x10	295
250-32	55	300	250	220	690	355	520	150	260	200	660	510	110	25	28	14	525	140	48	110	14x10	311
250-40	55	300	250	220	690	400	560	150	260	200	660	510	110	25	28	14	525	140	48	110	14x10	390

* Note: Flange dimensions and drilling according to ISO 7005. 2 - 16 bar (BS4504 - 1969 Table 16/11, DIN 2533 PN 16).

* Holes - Equally spaced straddling pump centreline.

* Dimensions shown in mm.



Branch Size	Flange		Raised Face		NO.	Drilling*		Bolting
	D	b	d1	f		d2	k	
32	140	18	78	2	4	18	100	M16
40	150	18	88	3	4	18	110	M16
50	165	20	102	3	4	18	125	M16
65	185	20	122	3	4	18	145	M16
80	200	22	138	3	8	18	160	M16
100	220	24	158	3	8	18	180	M16
125	250	26	188	3	8	18	210	M16
150	285	26	212	3	8	22	240	M20

* All specifications subject to change without prior notice.